

**Air Leak at the Door Panel**

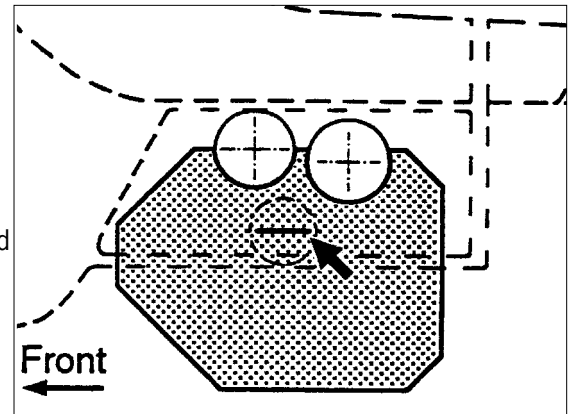
**Vehicle Type:** 911 Carrera (964 and 993)  
911 Turbo (964 and 993)

**Model Year:** As of Model Year 1989

**Concern:** Air drafts in the area of the inner door opener.

**Modification:** As of April 1, 1997 from VIN: 99 1VS322950

From the above-mentioned VIN a felt piece is installed in the inner door opener (Figure 1). This significantly reduces air drafts from the area of the inner door opener. The felt piece may be installed in earlier vehicles.



**Figure 1**

**Repairs:** Installation of felt piece.

- Disconnect the door opener rod, inner door cover and pull handle.
- Lay felt piece onto the inside of the inner door opener, and mark with a pen or suitable marker (Figure 1).

**Important:** The pointed part of the felt piece must point forward in the driving direction.

- Apply glue on the marked area of the inner door panel and install the felt piece.
- Reinstall the pull handle, inner door cover, and the door opener rod.

**Important:** Avoid damaging the felt piece by carefully pushing the door opener rod through the slot in the felt (Figure 1, arrow).

**Parts :** 993 555 715 00 Felt

Labor:	Time units	Labor Operation	Description
	70 t.u.	70 59 51 00	R & R inner door panel, install felt
	130 t.u.	70 59 52 00	R & R both inner door panels, install felt

**Important Notice:** Porsche Cars N.A Technical Bulletins are intended for use by professional technicians, not a "Do-it-yourselfer." They are written to inform these technicians of conditions that may occur on some vehicles, or to provide information that could assist in the proper service of a vehicle. Special tools may be required to perform certain operations identified in these bulletins. Use of tools and procedures other than those recommended in these bulletins may be detrimental to the safe operation of your vehicle. Properly trained technicians have the equipment, tools, safety instructions and know-how to do a job properly and safely. If a condition is described, do not assume that the bulletin applies to your vehicle, or that your vehicle will have that condition. See your Porsche Dealer for information on whether your vehicle may benefit from the information. Part numbers listed in these bulletins are for reference only. Always check with your authorized Porsche dealer to verify correct part numbers.

©1997 Porsche Cars North America, Inc.

Dealership	Service Manager	Shop Foreman	Service Technician				
Distribution	Asst. Manager	Warranty Admin.	Service Technician				
Routing							

The trademarks Porsche®, Targa®, Carrera®, Boxster®, Tiptronic®, Varioram® and the Porsche Crest are registered trademarks of Dr. Ing. h.c.F. Porsche AG and its affiliate, Porsche Cars North America, Inc.